

McCLINTOCK

LIVINGSTONE

LAWRENCE

NIGHTINGALE

SPENCER

STANHOPE


Extreme

High

Needs Evaluation

APPROVED

November 28, 2018




1 : 60,000

1,000 500 0 1,000 2,000 Metres

THIS MAP IS FOR ILLUSTRATION PURPOSES ONLY.
THE INFORMATION DISPLAYED ON THESE MAPS HAS BEEN CREATED FROM MINISTRY OF NATURAL RESOURCES, ONTARIO BASE MAPPING & MPAC PROPERTY FABRICS.
WHILE EVERY EFFORT HAS BEEN MADE TO ACCURATELY DEPICT THE INFORMATION, THIS MAP SHOULD NOT BE RELIED ON AS A PRECISED INDICATOR OF LOCATIONS OF FEATURES OR ROADS.

BASE MAPPING SOURCE:

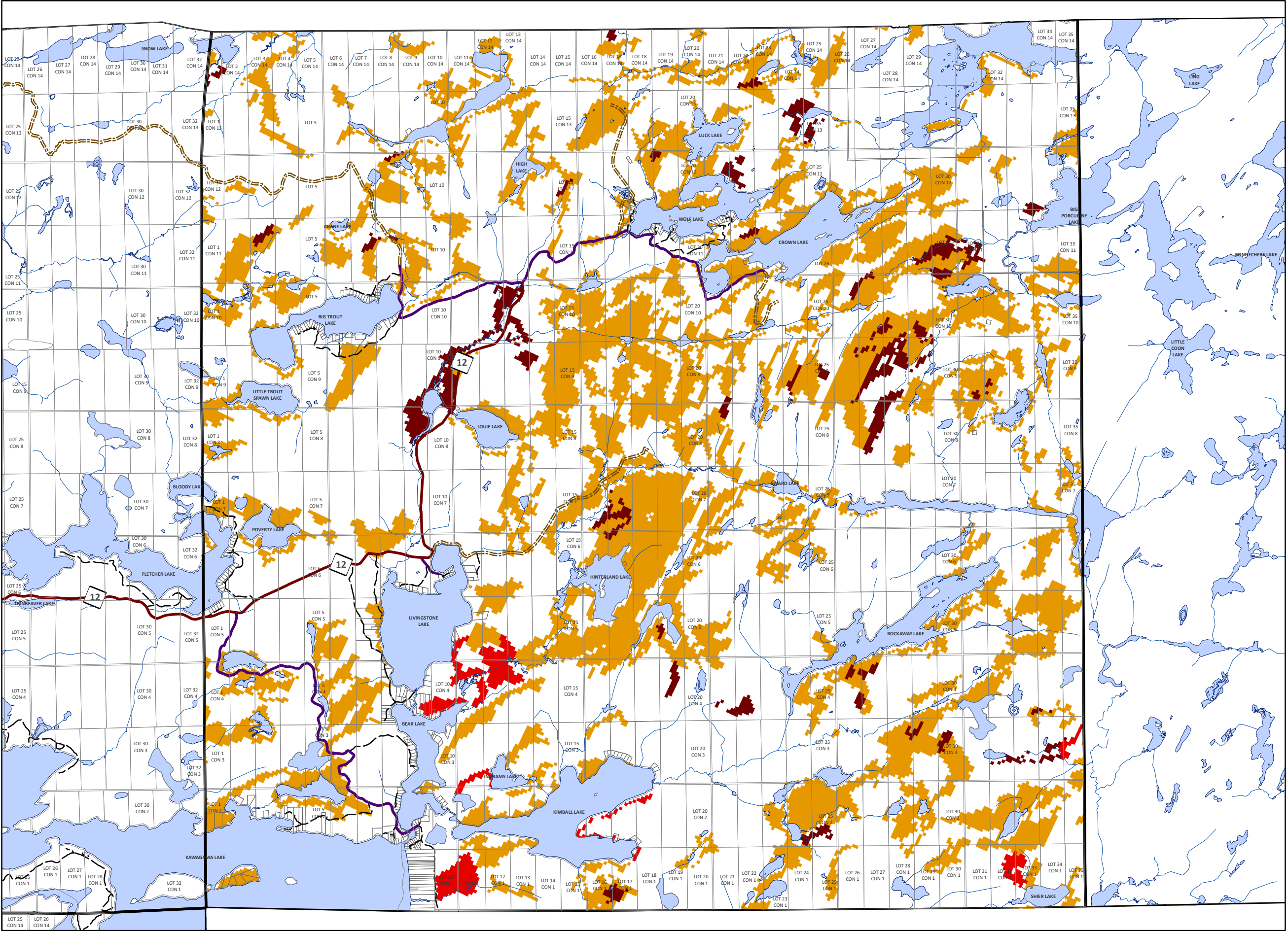
MINISTRY OF NATURAL RESOURCES - ONTARIO BASE MAPPING
MPAC - MUNICIPAL PROPERTY ASSESSMENT CORPORATION



PLANScape
BUILDING COMMUNITY THROUGH PLANNING

APPENDIX 'A' - WILDLAND FIRE RISK MAPPING

GEOGRAPHIC TOWNSHIP OF LIVINGSTONE



Extreme

High

Needs Evaluation

APPROVED

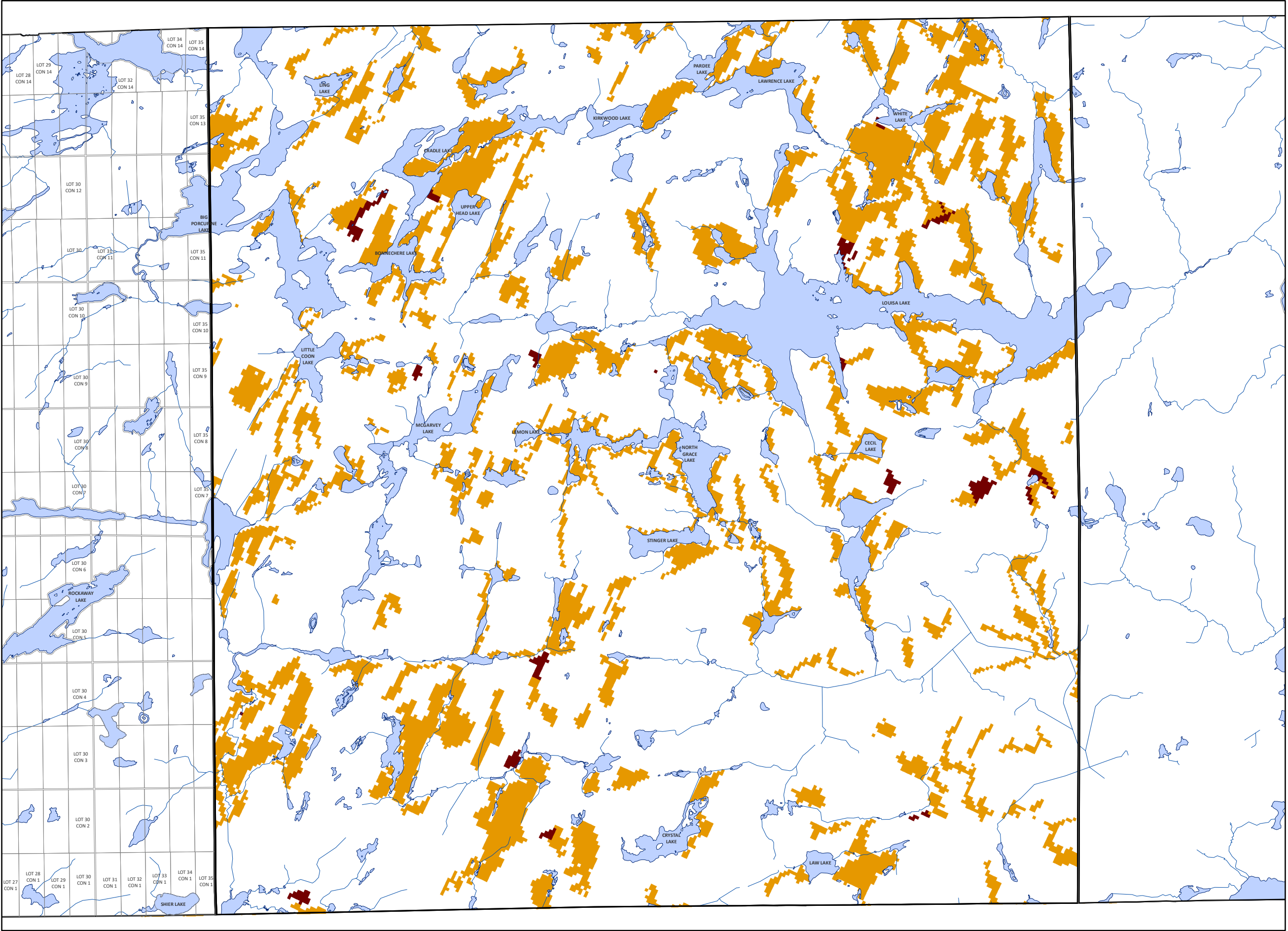
November 28, 2018

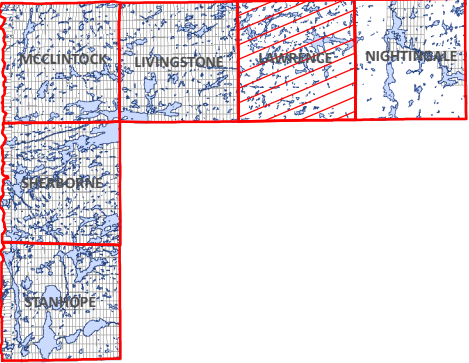

THIS MAP IS FOR ILLUSTRATION PURPOSES ONLY.
THE INFORMATION DISPLAYED ON THESE MAPS HAS BEEN CREATED FROM MINISTRY OF NATURAL RESOURCES, ONTARIO BASE MAPPING & MPAC PROPERTY FABRICS.
WHILE EVERY EFFORT HAS BEEN MADE TO ACCURATELY DEPICT THE INFORMATION, THIS MAP SHOULD NOT BE RELIED ON AS A PRECISED INDICATOR OF LOCATIONS OF FEATURES OR ROADS.

BASE MAPPING SOURCE:
MINISTRY OF NATURAL RESOURCES - ONTARIO BASE MAPPING
MPAC - MUNICIPAL PROPERTY ASSESSMENT CORPORATION

APPENDIX 'A' - WILDLAND FIRE RISK MAPPING

GEOGRAPHIC TOWNSHIP OF LAWRENCE



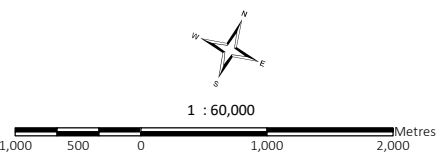


Extreme

High


Needs Evaluation

APPROVED
November 28, 2018



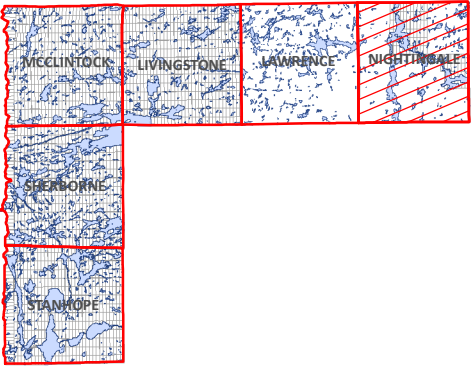
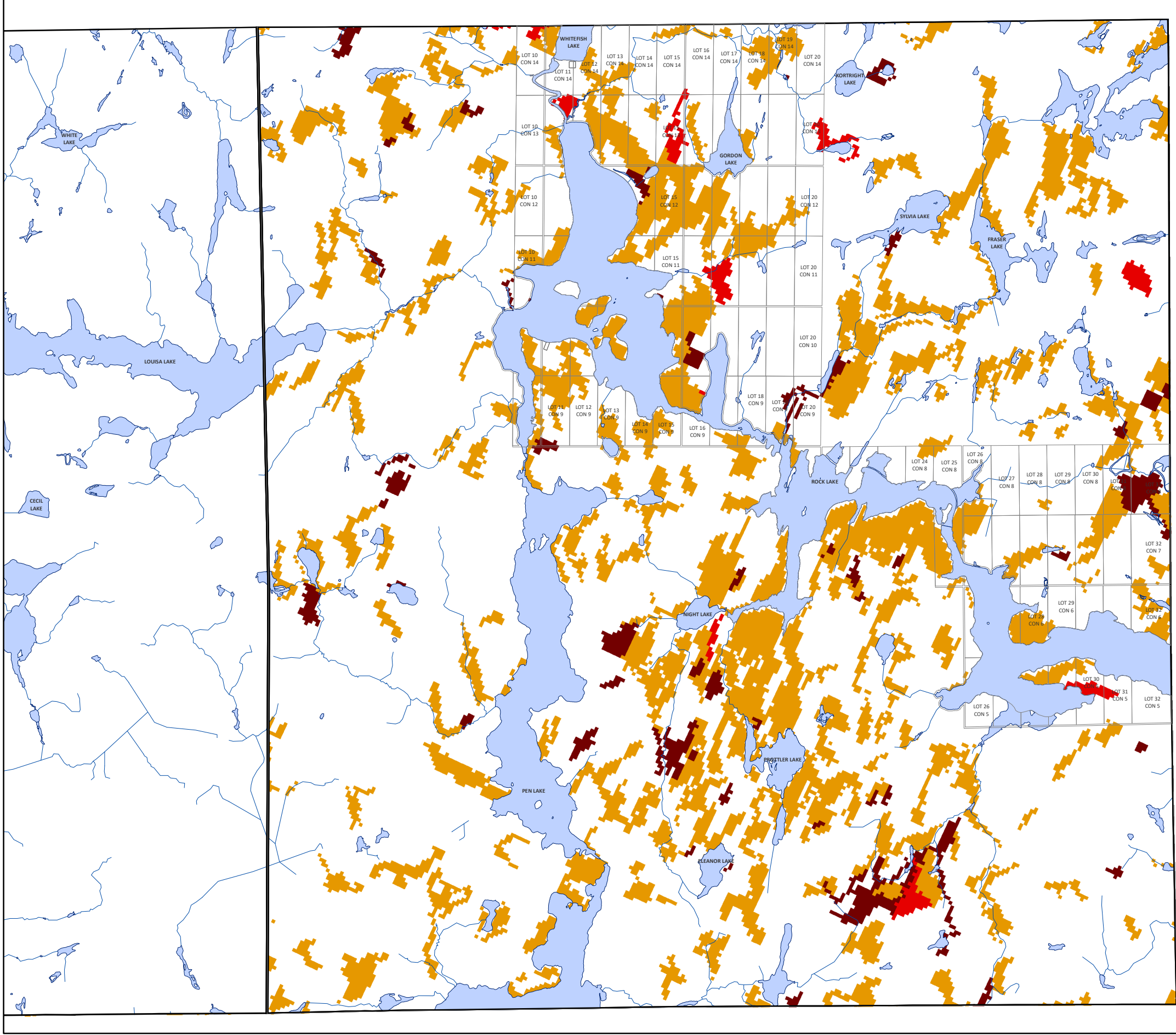
THIS MAP IS FOR ILLUSTRATION PURPOSES ONLY.
THE INFORMATION DISPLAYED ON THESE MAPS HAS BEEN CREATED FROM MINISTRY OF NATURAL RESOURCES, ONTARIO BASE MAPPING & MPAC PROPERTY FABRICS.
WHILE EVERY EFFORT HAS BEEN MADE TO ACCURATELY DEPICT THE INFORMATION, THIS MAP SHOULD NOT BE RELIED ON AS A PRECISED INDICATOR OF LOCATIONS OF FEATURES OR ROADS.

BASE MAPPING SOURCE:
MINISTRY OF NATURAL RESOURCES - ONTARIO BASE MAPPING
MPAC - MUNICIPAL PROPERTY ASSESSMENT CORPORATION

**PLANScape**
BUILDING COMMUNITY THROUGH PLANNING

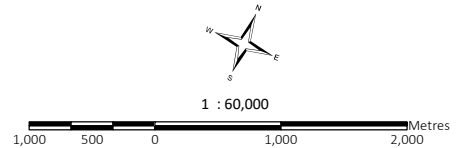
APPENDIX 'A' - WILDLAND FIRE RISK MAPPING	GEOGRAPHIC TOWNSHIP OF NIGHTINGALE
---	------------------------------------

APPENDIX 'A' - WILDLAND FIRE RISK MAPPING	GEOGRAPHIC TOWNSHIP OF NIGHTINGALE
---	------------------------------------



- Extreme
- High
- Needs Evaluation

APPROVED
November 28, 2018



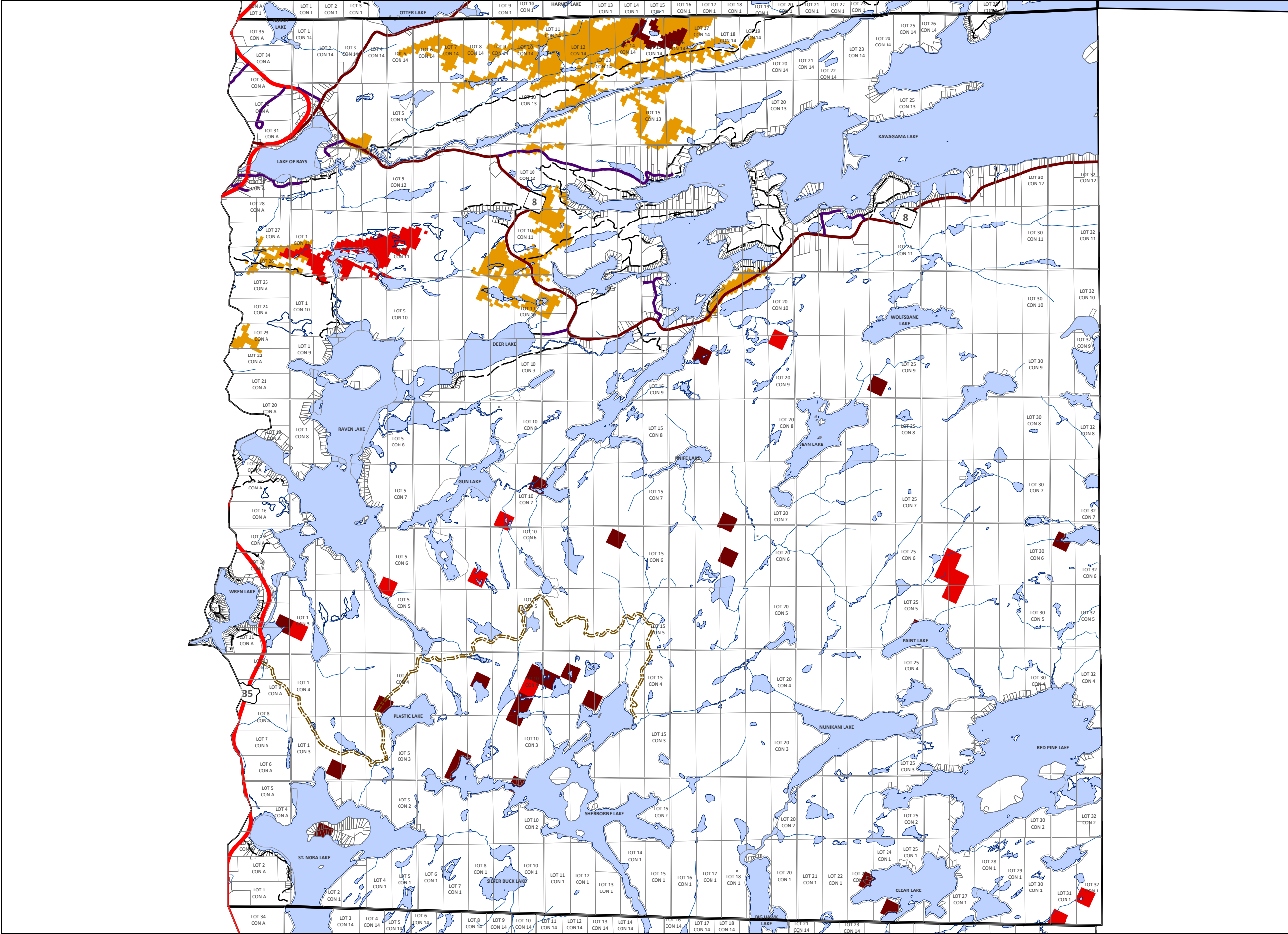
THIS MAP IS FOR ILLUSTRATION PURPOSES ONLY.
THE INFORMATION DISPLAYED ON THESE MAPS HAS BEEN CREATED FROM MINISTRY OF NATURAL
RESOURCES, ONTARIO BASE MAPPING & MPAC PROPERTY FABRICS.
WHILE EVERY EFFORT HAS BEEN MADE TO ACCURATELY DEPICT THE INFORMATION,
THIS MAP SHOULD NOT BE RELIED ON AS A PRECISED INDICATOR OF LOCATIONS OF FEATURES OR ROADS.

MINISTRY OF NATURAL RESOURCES - ONTARIO BASE MAPPING
MPAC - MUNICIPAL PROPERTY ASSESSMENT CORPORATION



APPENDIX 'A' - WILDLAND FIRE RISK MAPPING

GEOGRAPHIC TOWNSHIP OF
SHERBORNE



Extreme

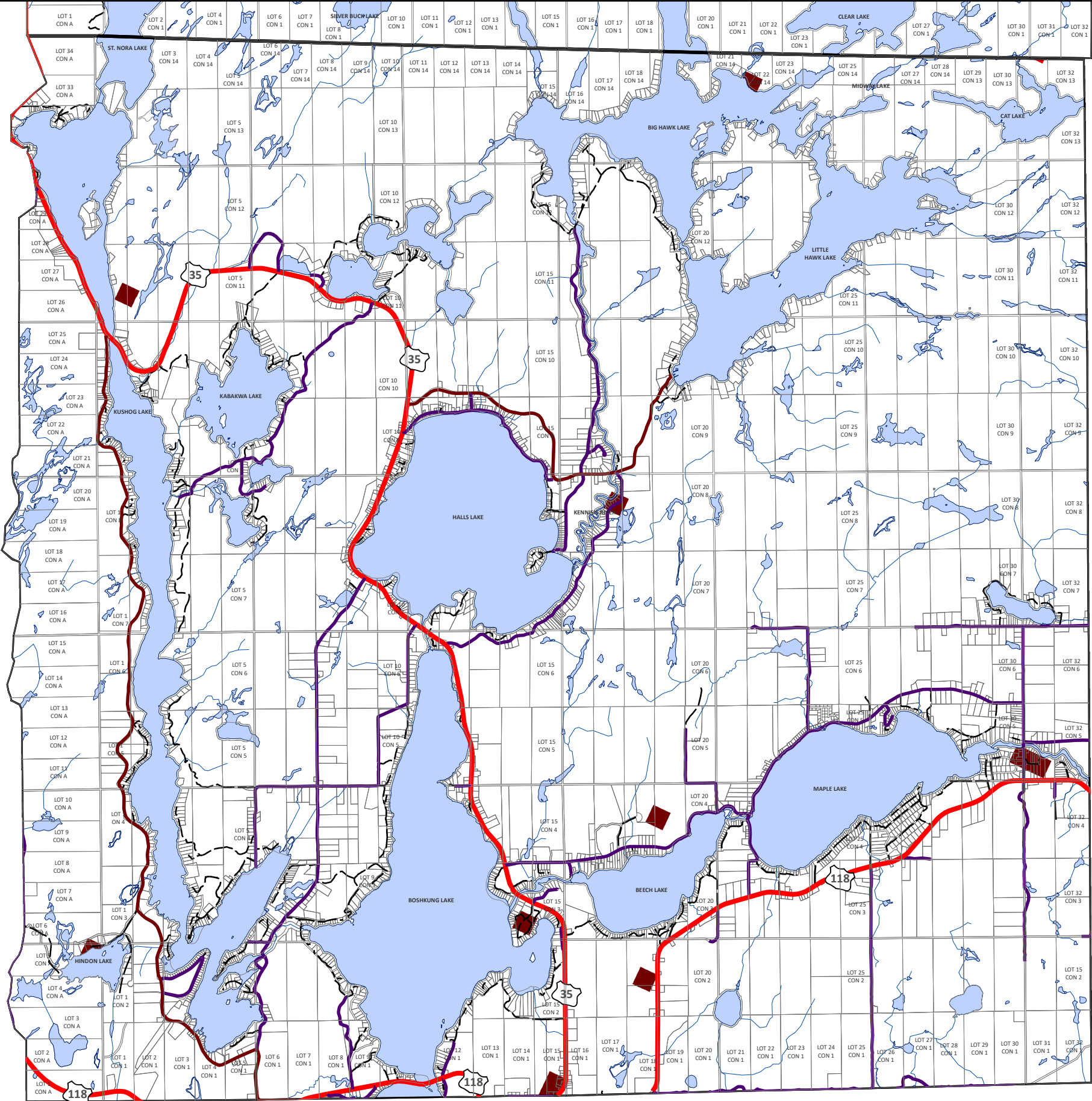
High

Needs Evaluation

APPROVED
November 28, 2018

THIS MAP IS FOR ILLUSTRATION PURPOSES ONLY.
THE INFORMATION DISPLAYED ON THESE MAPS HAS BEEN CREATED FROM MINISTRY OF NATURAL RESOURCES, ONTARIO BASE MAPPING & MPAC PROPERTY FABRICS.
WHILE EVERY EFFORT HAS BEEN MADE TO ACCURATELY DEPICT THE INFORMATION, THIS MAP SHOULD NOT BE RELIED ON AS A PRECISED INDICATOR OF LOCATIONS OF FEATURES OR ROADS.

BASE MAPPING SOURCE:
MINISTRY OF NATURAL RESOURCES - ONTARIO BASE MAPPING
MPAC - MUNICIPAL PROPERTY ASSESSMENT CORPORATION



Extreme

High

Needs Evaluation

APPROVED
November 28, 2018

THIS MAP IS FOR ILLUSTRATION PURPOSES ONLY.
THE INFORMATION DISPLAYED ON THESE MAPS HAS BEEN CREATED FROM MINISTRY OF NATURAL RESOURCES, ONTARIO BASE MAPPING & MPAC PROPERTY FABRICS.
WHILE EVERY EFFORT HAS BEEN MADE TO ACCURATELY DEPICT THE INFORMATION, THIS MAP SHOULD NOT BE RELIED ON AS A PRECISED INDICATOR OF LOCATIONS OF FEATURES OR ROADS.

BASE MAPPING SOURCE:
MINISTRY OF NATURAL RESOURCES - ONTARIO BASE MAPPING
MPAC - MUNICIPAL PROPERTY ASSESSMENT CORPORATION